

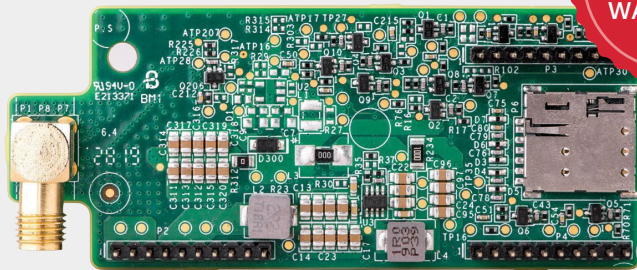
Cellular Plug-in with Data Plan for the US and Canada for SetApp Inverters

For Residential Systems:

CELL-B-R05-US-S-S2
 CELL-B-R05-NA-S-S2

For Commercial Systems:

CELL-B-R05-US-S-S4 CELL-B-R05-US-T-S4
 CELL-B-R05-US-S-S5 CELL-B-R05-US-T-S5
 CELL-B-R05-NA-T-S4



Cellular Internet Connectivity for Commercial and Residential Installations

- / Compatible with SetApp-enabled inverters
- / Supports high bandwidth monitoring of inverters, optimizers, EV chargers, batteries, meters and weather stations
- / Connects SolarEdge inverters wirelessly to the internet
- / Enables remote analysis and troubleshooting
- / No need for internet infrastructure at site
- / 5-year-year data plan is included
- / Installed within the inverter enclosure for outdoor resilience
- / Comprehensive coverage in the US and Canada

/ Cellular Plug-in with Data Plan

For the US and Canada for SetApp Inverters

CELL-B-R05-US-S-S2
 CELL-B-R05-NA-S-S2
 CELL-B-R05-US-S-S4
 CELL-B-R05-US-S-S5

CELL-B-R05-NA-T-S4
 CELL-B-R05-US-T-S4
 CELL-B-R05-US-T-S5

COMPATIBLE INVERTERS (With SetApp Configuration)	CELL-B-R05-xx-S-Sx	CELL-B-R05-xx-T-Sx	UNIT
	SEXXXX-XXXXXBXX4	SExxK-xxxlxxx4 (excluding SExxK-xxxPlxxxx)	
Monitoring	Continuous connection with 5 minute telemetry from all connected inverters		
Supported Residential Systems (CELL-B-R05-xx-S-S2)	Residential systems: 1 inverter, up to 45 power optimizers, and 1 meter Residential StorEdge systems: 1 inverter connected, up to 30 power optimizers, 2 batteries and 1 meter		
Supported Power of Commercial Systems	Up to 200kW AC (for CELL-B-R05-xx-x-S4)	Up to 1000kW AC (for CELL-B-R05-xx-x-S5)	kW AC
Number of Monitored Inverters with a single Cellular Plug-in	Commercial: Up to 32 inverters, limited by the system AC size ⁽²⁾ Residential: 1 inverter		
Data Plan Duration	5 years prepaid plan		
Model Number ⁽³⁾	CELL-B1 / CELL B3		
RF PERFORMANCE	OPERATING FREQUENCY		
LTE Cat M1 FDD	Band/ Freq (MHz)	Modern Transmit / Modern received	
	2100 (B1)	1920-1980 / 2110-2170	MHz
	1900 (B2)	1850-1910 / 1930-1990	MHz
	1800 (B3)	1710-1785 / 1805-1880	MHz
	1700 (B4)	1710-1755 / 2110-2155	MHz
	850 (B5)	824-849 / 869-894	MHz
	900 (B8)	880-915 / 925-960	MHz
	700 (B12)	699-716 / 729-746	MHz
	700 (B13)	777-787 / 746-756	MHz
	850 (B18)	815-830 / 860-875	MHz
	850 (B19)	830-845 / 875-890	MHz
	800 (B20)	832-862 / 791-821	MHz
	1900 (B25)	1850-1915 / 1930-1995	MHz
	850 (B26)	814-849 / 859-894	MHz
	700 (B28)	703-748 / 758-803	MHz
	1900 (B39)	1880 / 1920	MHz
Bandwidth	1.4, 3, 5 ⁽⁴⁾		MHz
Maximum Transmit Power	23		dBm
Receiver Input Sensitivity (CE Mode A)	-107		dBm
Modulation	Downlink: QPSK\16QAM\64QAM, Uplink: QPSK\16QAM		
ANTENNA			
Dual Antenna Bands	824-960	1710-2170	MHz
Antenna Type	Outdoor		
Antenna Connector	RP-SMA or N plug ⁽⁵⁾		
VSWR	≤4.0		
Gain	2		dBi
Polarization	Vertical		
Material	PC Lexan 503R-WH5151L or WH8G952 Sabic		
Dimensions (Length x Diameter)	7.87 x 0.78 / 200 x 20		in / mm
Antenna Cable length	CELL-B-R05-xx-S-Sx	52 / 130	in / mm
	CELL-B-R05-xx-T-Sx ⁽⁶⁾	71 / 180	

(1) Customer is responsible for verifying that the site location has adequate mobile coverage by the third party service provider prior to any installation by accessing the following link for US: <https://www.solaredge.com/us/products/communication/cellular-communication-options/#/> select the CAT M1 option. Refer to the following link for Canada: https://www.bell.ca/Mobility/Our_network_coverage and select the LTE-M option

(2) For larger systems, use multiple cellular plug-ins

(3) Two types of modems can be used interchangeably

(4) Exact value depends on actual operating band

(5) Two types of antennas may be supplied interchangeably

(6) Long antenna cable should be used with Three Phase Synergy Technology Inverter up to 120kW

(7) Information concerning the Data Plan's terms & conditions is available in the following link:

<https://www.solaredge.com/sites/default/files/se-communication-plan-terms-and-conditions-eng.pdf>

/ Cellular Plug-in with Data Plan

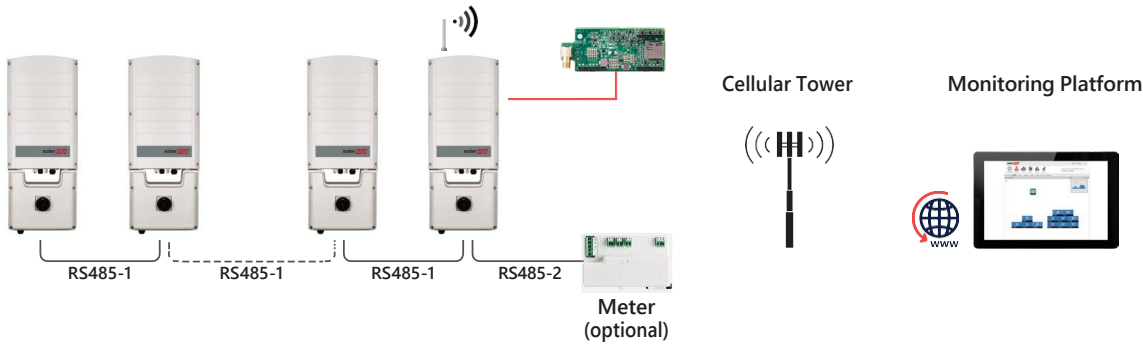
For the US and Canada for SetApp Inverters

CELL-B-R05-US-S-S2
 CELL-B-R05-NA-S-S2
 CELL-B-R05-US-S-S4
 CELL-B-R05-US-S-S5

CELL-B-R05-NA-T-S4
 CELL-B-R05-US-T-S4
 CELL-B-R05-US-T-S5

STANDARD COMPLIANCE		
EMC and Radio	FCC parts 15, 22, 24 class B; Industry Canada (IC):ICS-003, RSS-102 AS/CA S042.4 Requirements for connection to an airinterface of a Telecommunications Network Part 4: IMT Customer Equipment	
Safety cUL, UL60950	cUL, UL60950	
RoHS	Yes	
INSTALLATION SPECIFICATIONS		
Dimensions (L x W x H)	3.07 x 1.27 x 0.56 / 78.2 x 32.5 x 14.2	in / mm
Operating Temperature	-40 to +85 / -40 to +185 °C / °F	
Mounting	Built into the inverter or purchased separately	
Power consumption	0.85 (@23 dBm output power)	W
SIM CARD HOLDER		
Type	Nano Sim	

Single or Multiple Commercial Inverters



Single or Multiple Residential Inverters

