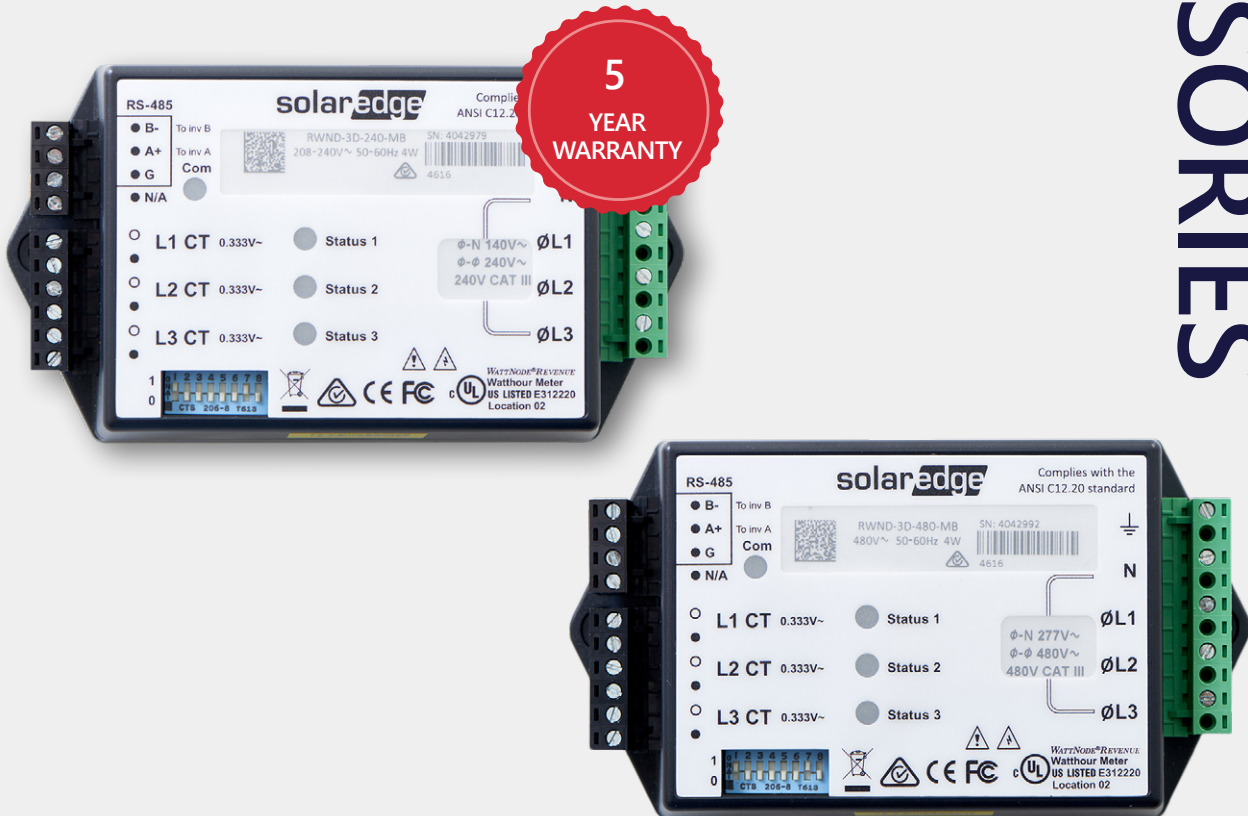


Energy Meter with Modbus for North America

SE-RWND-3D-208-MB
SE-RWND-3D-480-MB



Revenue Grade Energy Meter for Commercial Installations

- / High accuracy revenue grade meter readings for production monitoring
- / Small and easy to install - fits in standard electrical panel
- / Supports commercial and utility-size installations
- / Supports RS485 120Ω line termination
- / Communicates over RS485 to provide monitoring data

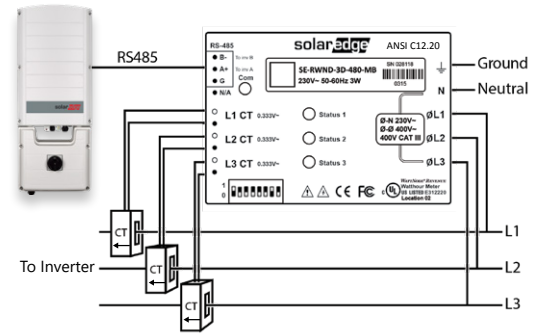
/ Energy Meter with Modbus for North America

SE-RWND-3D-208-MB / SE-RWND-3D-480-MB

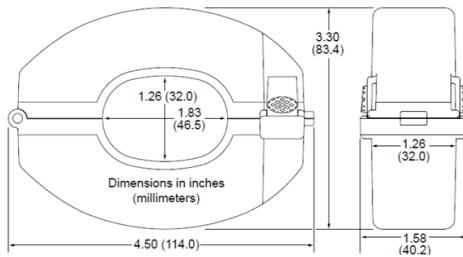
WHEN ORDERING A METER, ORDER CURRENT TRANSFORMERS AS WELL:

CURRENT TRANSFORMER MODELS(*)	CLASS	RATED RMS CURRENT	DIMENSIONS (INTERNAL/ EXTERNAL)
SEACTL-1250-150-C3	0.3	150 A	1.83 x 1.26 in. / 4.50 x 3.30 in.
SEACTL-1250-300-C3	0.3	300 A	
SEACTL-1250-600-C3	0.3	600 A	

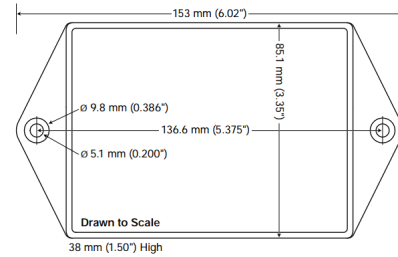
* One current transformer per phase; Sold in kits of 3 CTs. For other ratings contact SolarEdge



Current Transformer Dimensions



Meter Dimensions



	SE-RWND-3D-208-MB	SE-RWND-3D-480-MB	UNITS
ELECTRICAL SERVICE			
Operating Voltage Range - Line to Line	208-240	480	Vac
AC Frequency	60		Hz
Grids Supported: Three Phase ⁽¹⁾	4-wire WYE (L1-L2-L3-N) or 3 wire Delta	4-wire WYE (L1-L2-L3-N)	
Power Consumption (typ.)	1.8		W
COMMUNICATION			
Supported Communication Interfaces	RS485		
Default Device ID (Modbus)	1		
RS485 Line Termination	120		Ω
ACCURACY (@25°C, PF: 1)⁽²⁾			
1% - 100% of Rated CT Current	±0.5		%
STANDARD COMPLIANCE			
Safety	IEC 61010-1, CAN/CSA-C22.2 No. 61010-1-04, IEC 61010-1:2010 (3rd Edition)		
Immunity	EN 61326 -1:2013, EN 61000-4-2, EN 61000-4-3, EN 61000-4-4, EN 61000-4-5, EN 61000-4-6, EN 61000-4-11		
Emissions	FCC Part 15: Class B, CISPR11: 2009: Class B		
Revenue metering	ANSI C12.20-2010 class 0.5 ⁽²⁾		
INSTALLATION SPECIFICATIONS			
Dimensions (HxWxD)	6.02 × 3.35 × 1.50		in.
Weight	11		Lb.
Enclosure type	High impact, ABS and/or ABS/PC plastic UL 94V-0, IEC FV-0		
Operating Temperature Range	-40 to 167		°F
Relative Humidity (noncondensing)	5 - 90		%
Protection Rating	Indoor (Outdoor when installed in an outdoor enclosure)		
Mounting Type	DIN Rail / Wall mount		

⁽¹⁾ PE (Protective Earth) connection is not required for meter operation

⁽²⁾ Using Opt C0.3 CT models available from CCS